

# GA Safety Performance FY24 Year to Date



Federal Aviation  
Administration

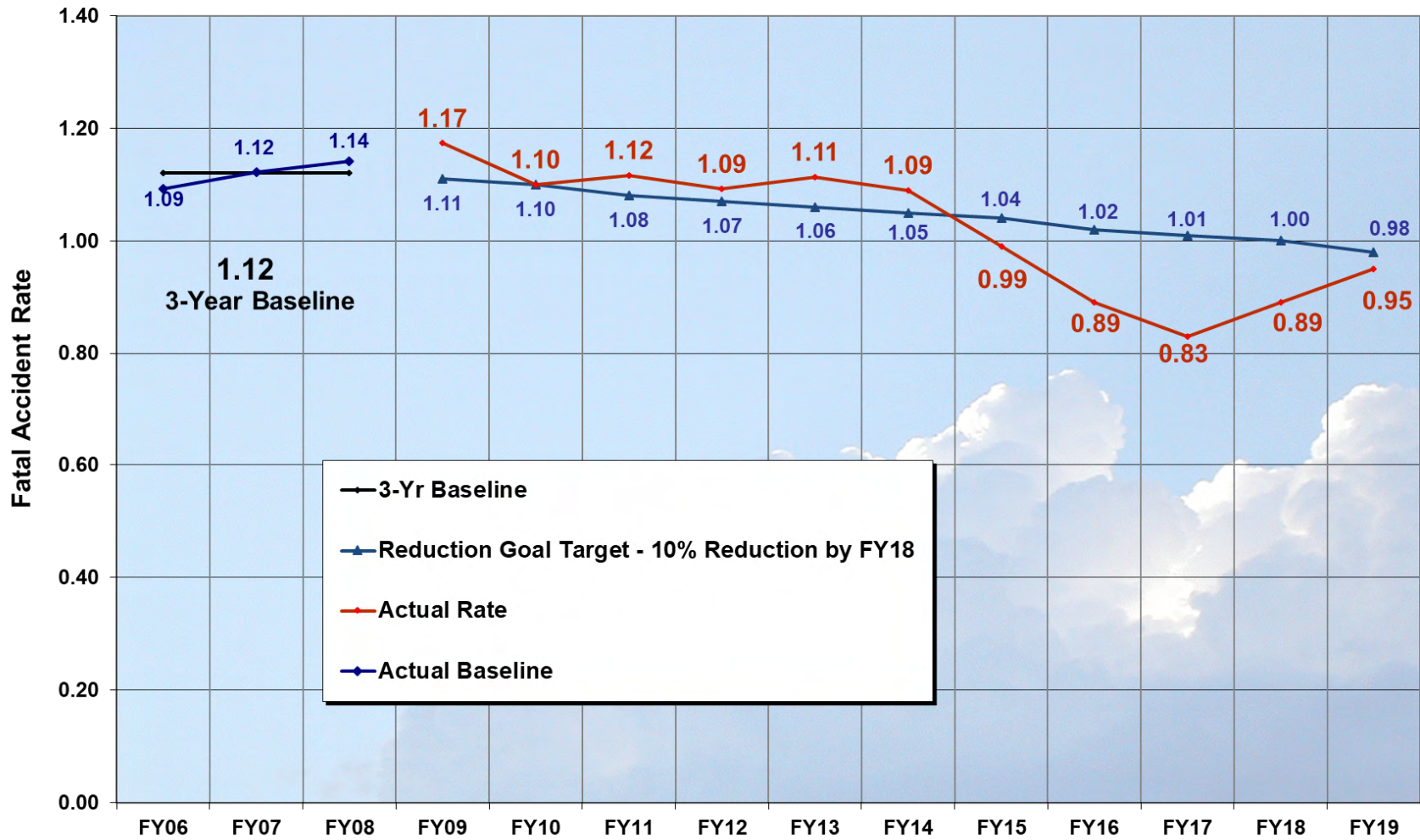
Presented to: **GAJSC SAT**

# GA Safety Performance Metrics

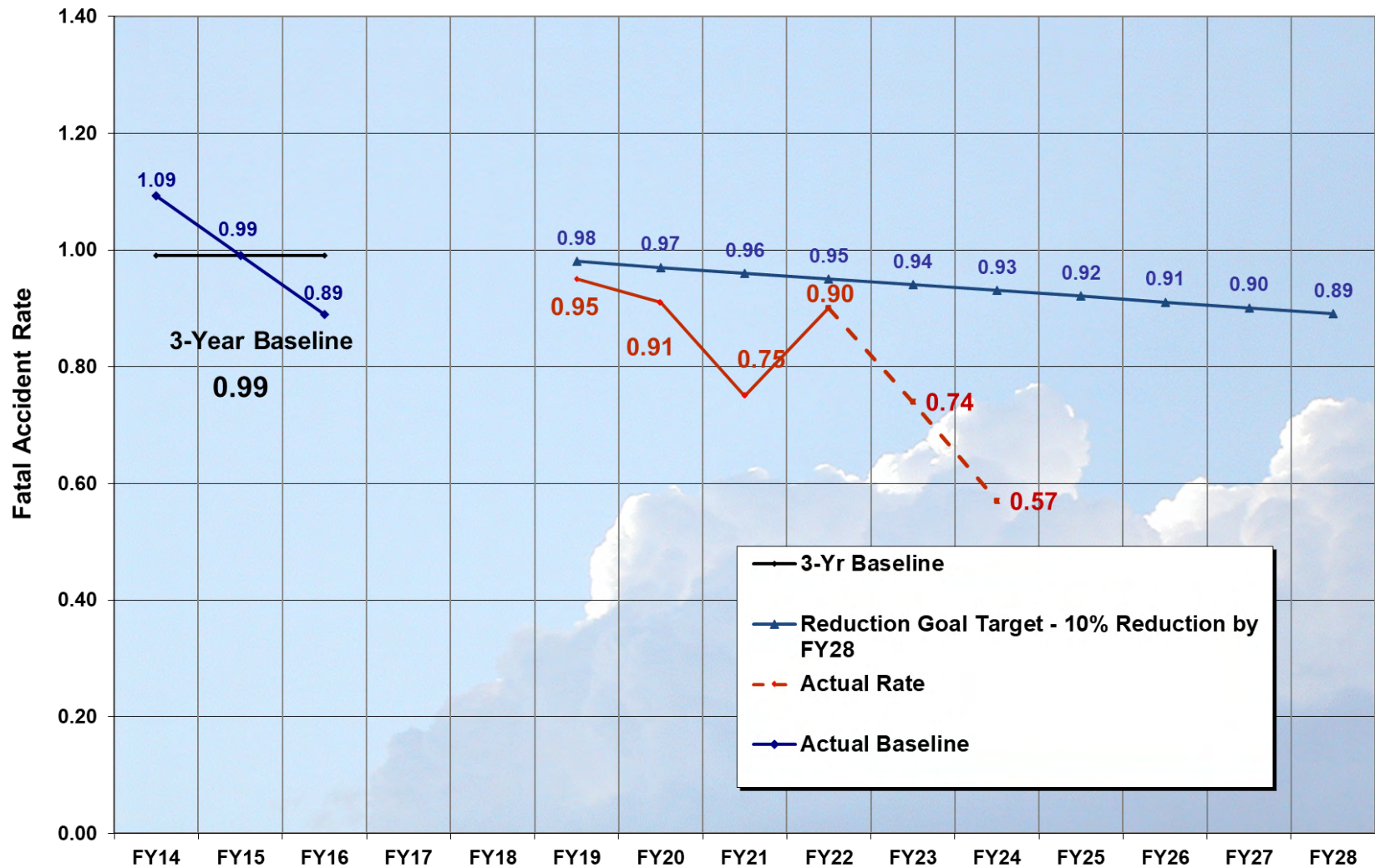
- **N-registered aircraft only**
- **Overall GA Fatal Accidents per 100,000 hrs**
  - Everything not 121 or commuter
- **Experimental Aircraft Fatal Accidents**



## AVS Safety Performance GA Fatal Accident Rate (Fatal Accidents/100,000 Hours)



## AVS Safety Performance GA Fatal Accident Rate (Fatal Accidents/100,000 Hours)



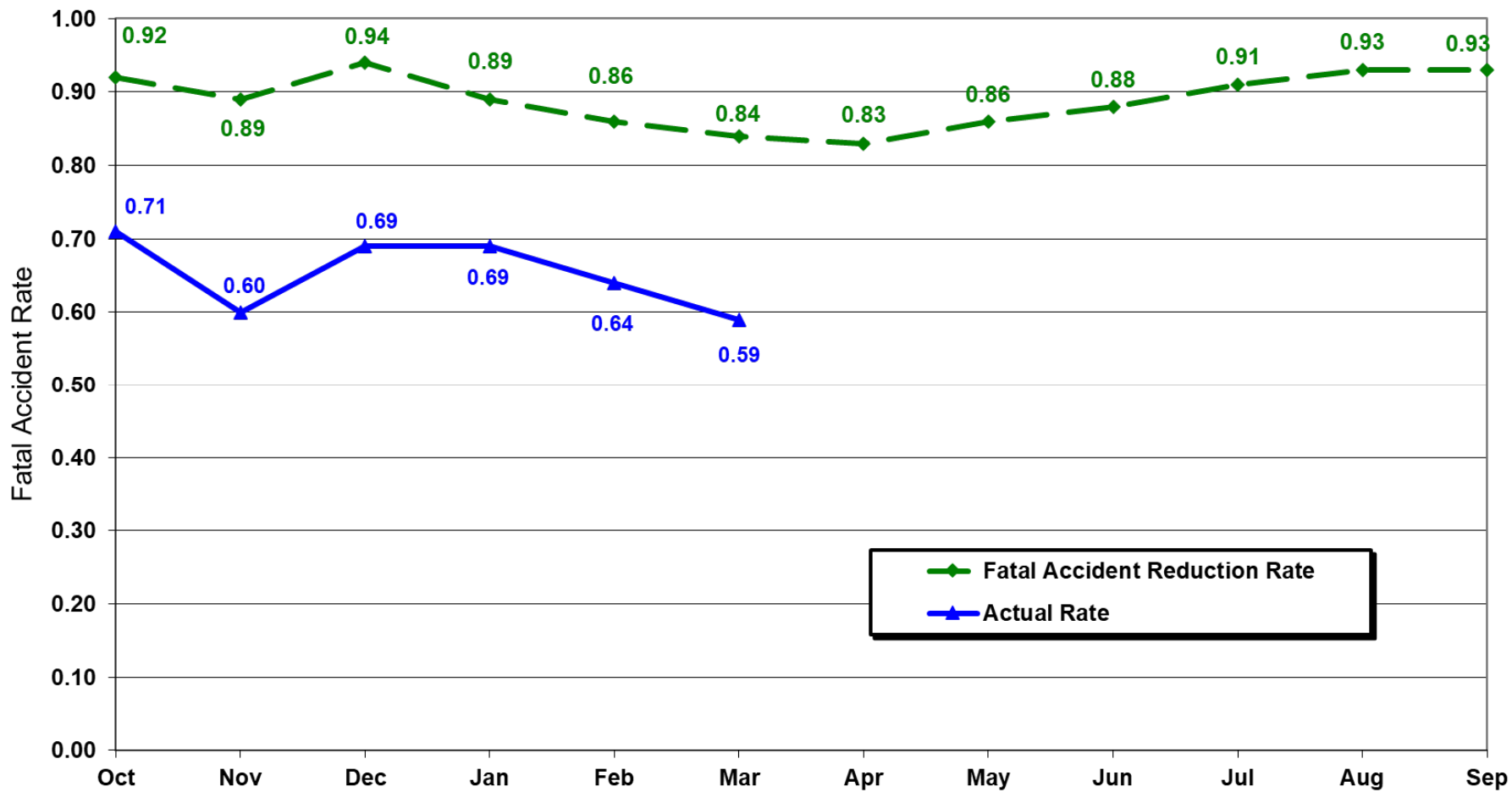
### FY2024 GA FATAL ACCIDENTS

Fatal Accident Reduction Goal Targets are Rate-based on 0.93 Fatal Accidents per 100,000 Hrs and are subject to change until APO provides activity estimates for FY24

	Actual	Daily Prorated Fatal Accident Reduction Goal	Fatal Accident Reduction Goal For Month	Daily Over/Under for Month	Day of month	Total Days in Month	Fatalities
Oct	17	22	22	-5	31	31	28
Nov	10	18	18	-8	30	30	17
Dec	17	20	20	-3	31	31	27
Jan	14	14	14	0	31	31	35
Feb	8	14	14	-6	29	29	19
Mar	8	18	18	-10	31	31	15
Apr	8	14	18	-6	23	30	11
May			25			31	
Jun			25			30	
July			29			31	
Aug			26			31	
Sep			22			30	
<b>TOTAL</b>	<b>82</b>	<b>120</b>	<b>251</b>	<b>-38</b>			<b>152</b>

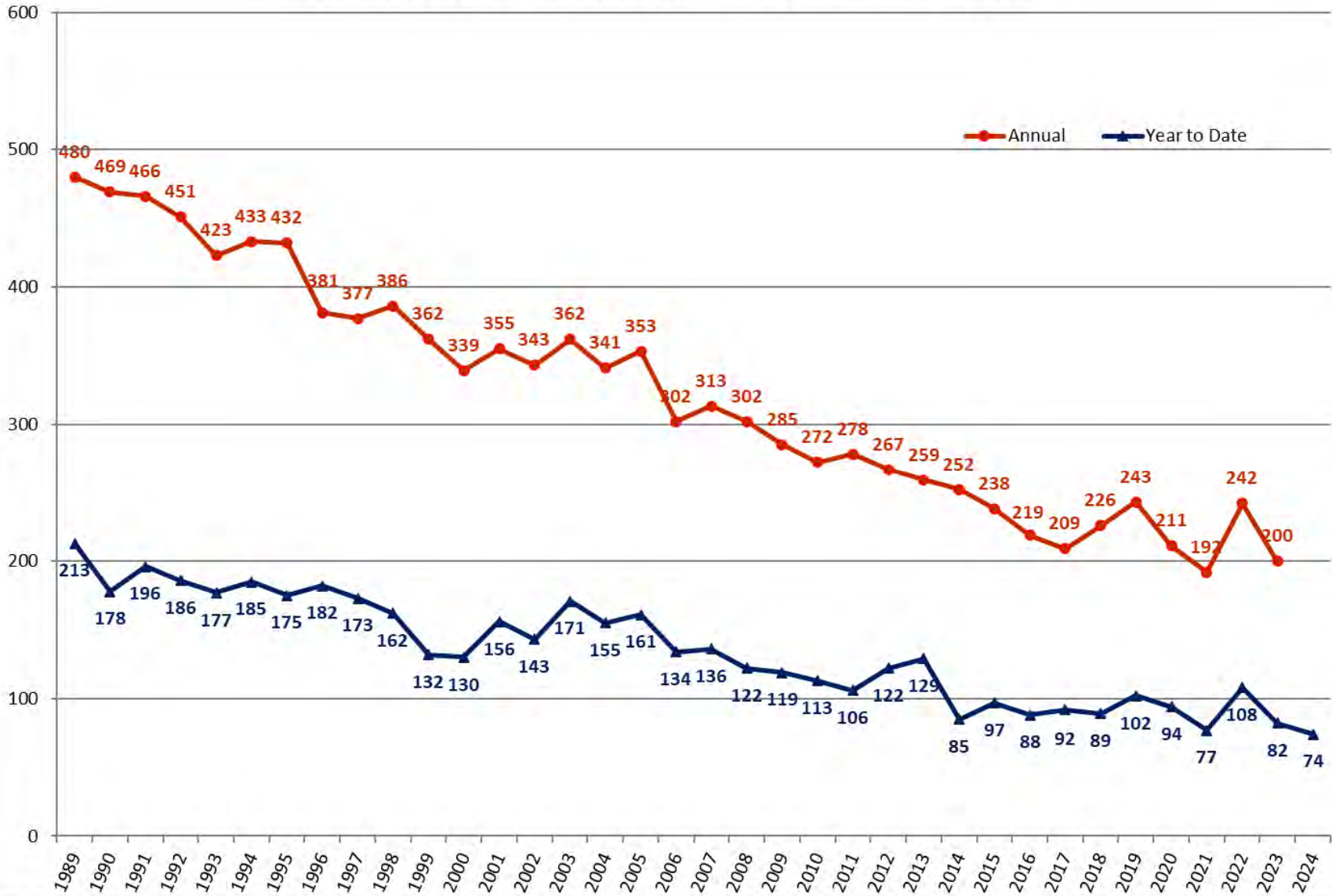


**AVS FY24 Safety Performance**  
**GA Fatal Accident Rate**  
(Fatal Accidents/100,000 Hours)



# General Aviation Fatal Accidents

General Aviation Includes General Aviation and Unscheduled Part 135



### FY2024 EXP FATAL ACCIDENTS

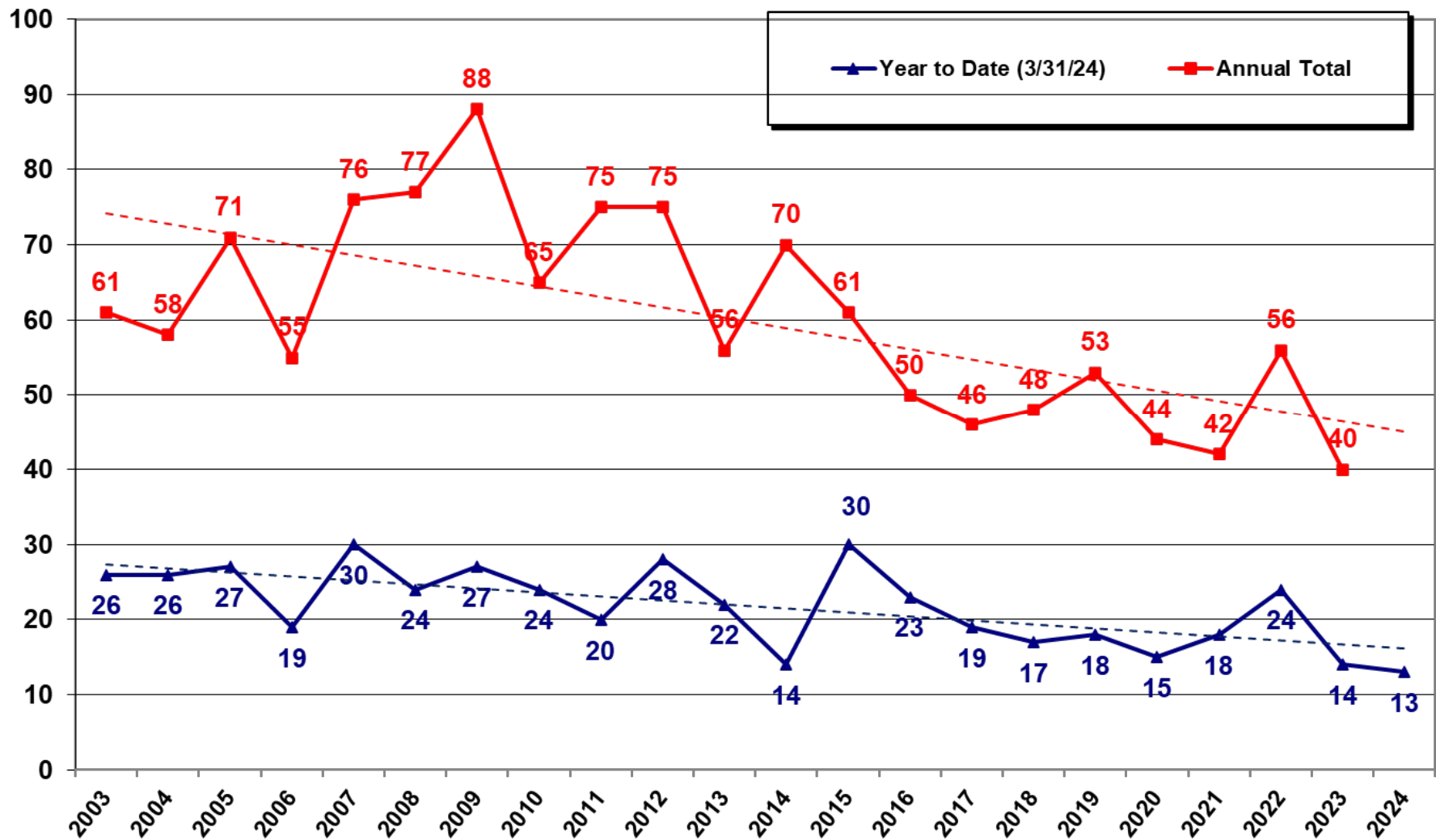
Fatal Accident Reduction Goal Targets are rate-based on a 1% reduction of the  
FY21 - FY23 average (46)

	Actual	Daily Prorated Fatal Accident Reduction Goal	Fatal Accident Reduction Goal For Month	Daily Over/Under for Month	Day of month	Total Days in Month	Fatalities
Oct	4	5	5	-1	31	31	4
Nov	0	3	3	-3	30	30	0
Dec	3	3	3	0	31	31	3
Jan	4	2	2	2	31	31	7
Feb	0	3	2	-3	29	28	0
Mar	2	3	3	-1	31	31	2
Apr	3	4	4	-1	23	30	5
May			3			31	
Jun			6			30	
July			5			31	
Aug			5			31	
Sep			5			30	
<b>TOTAL</b>	<b>16</b>	<b>23</b>	<b>46</b>	<b>-7</b>			<b>21</b>





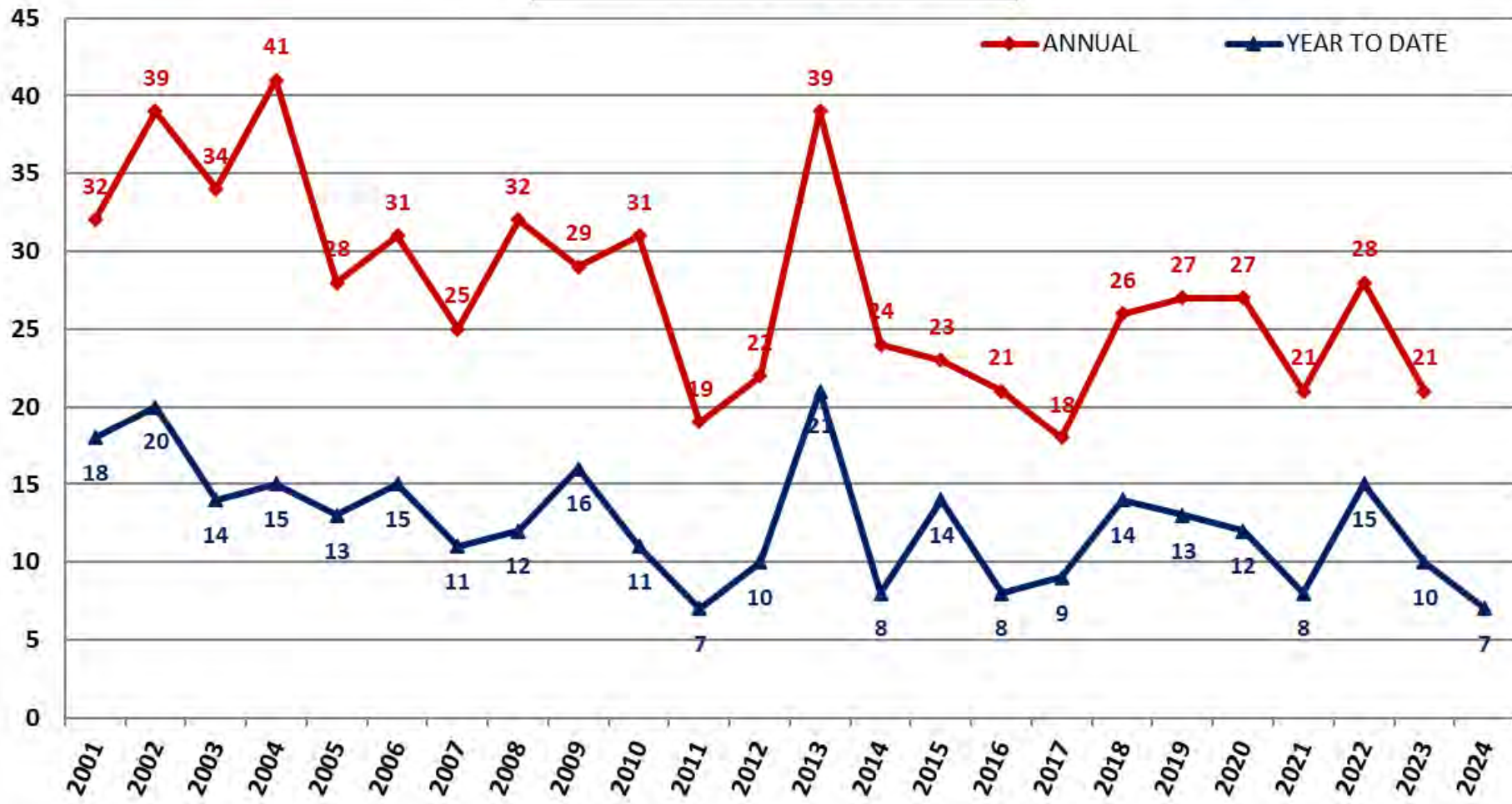
## Experimental General Aviation Fatal Accidents FY2003 - FY2024 (YTD)



<b>FY24 Experimental Fatal Accidents</b>				
	<b>Type</b>	<b>#</b>	<b>% of Exp</b>	<b>% of All GA</b>
	<b>AB</b>	<b>14</b>	<b>87.5%</b>	<b>17.3%</b>
	<b>E-LSA</b>	<b>2</b>	<b>12.5%</b>	<b>2.5%</b>
	<b>Racing</b>	<b>0</b>	<b>0.0%</b>	<b>0.0%</b>
	<b>Exhibition</b>	<b>0</b>	<b>0.0%</b>	<b>0.0%</b>
	<b>R&amp;D</b>	<b>0</b>	<b>0.0%</b>	<b>0.0%</b>
	<b>Market Survey</b>	<b>0</b>	<b>0.0%</b>	<b>0.0%</b>
	<b>R&amp;D/Market Survey</b>	<b>0</b>	<b>0.0%</b>	<b>0.0%</b>
	<b>Exhib/Racing</b>	<b>0</b>	<b>0.0%</b>	<b>0.0%</b>
	<b>Comp w/FAR</b>	<b>0</b>	<b>0.0%</b>	<b>0.0%</b>
	<b>Total</b>	<b>16</b>		<b>19.8%</b>

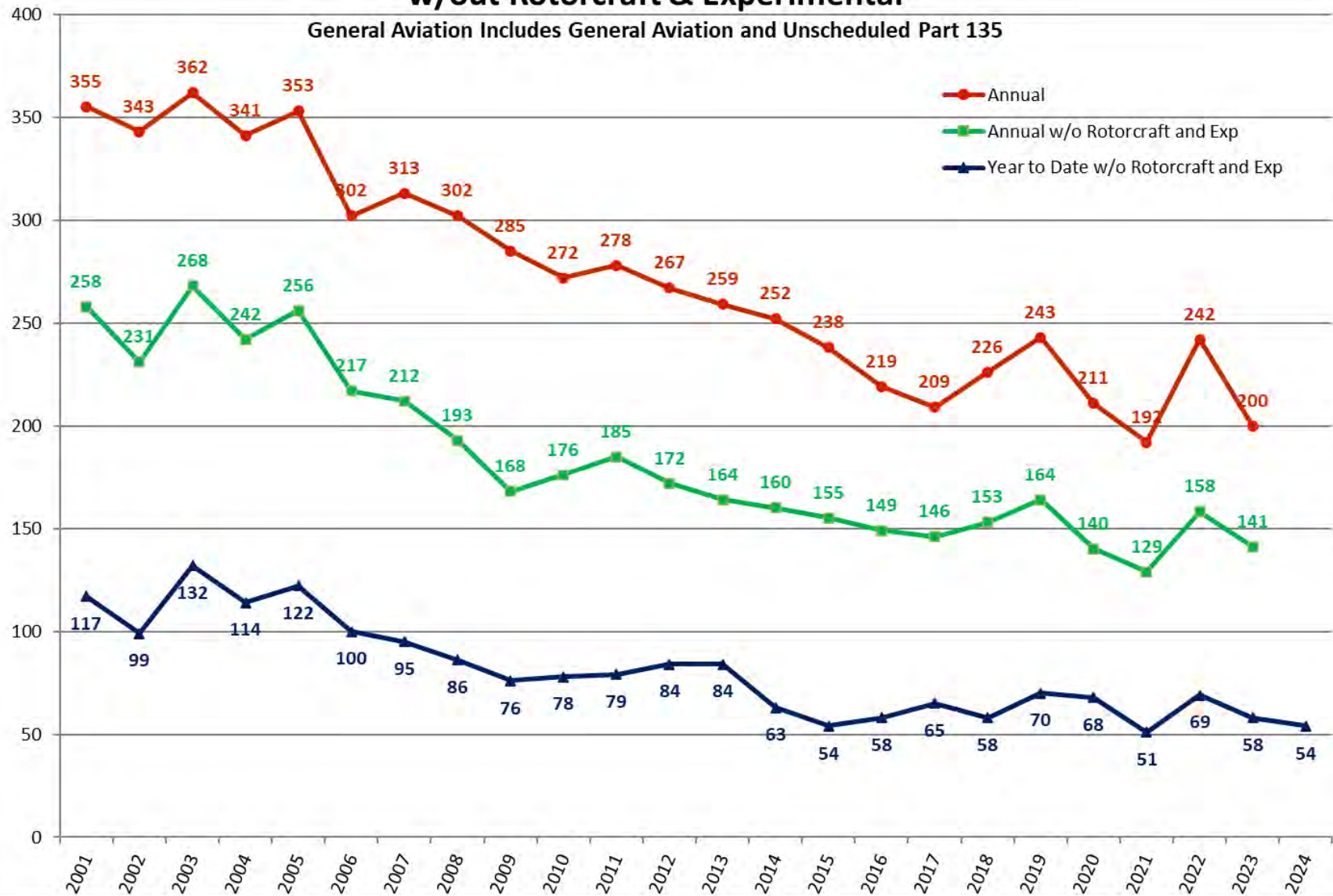


## Rotorcraft Fatal Accidents FY2001 - FY2024



# General Aviation Fatal Accidents w/out Rotorcraft & Experimental

General Aviation Includes General Aviation and Unscheduled Part 135



# Comments



# Experimental Aircraft Definitions



- **Amateur-built, kit-built**
- **Experimental-light-sport aircraft**
- **Air racing:** to operate an aircraft in air races, practice for air races, and to fly to and from racing events.
- **Exhibition:** to exhibit an aircraft's flight capabilities, performance, or unusual characteristics for air shows, motion pictures, television, and similar productions, and for the maintenance of exhibition flight proficiency.
- **Research and development:** to conduct aircraft operations as a matter of research or to determine if an idea warrants further development. Typical uses for this certificate include new equipment installations, operating techniques, or new uses for aircraft.
- **Market surveys:** to conduct market surveys, sales demonstrations, and customer crew training for U.S. manufacturers of aircraft or engines.
- **Showing compliance with regulations:** to show compliance to the airworthiness regulations when an applicant has revised the type certificate design data or has applied for a supplemental type certificate or field approval.

